

# Air Filter / Regulator

## Series UFR

### ◆ How to Order

UFR - 02 N C D



#### Drain type

Nil	Semi-auto drain
D	Auto drain
H	Manual drain

#### Filtration

Nil	5 μ m	C	40 μ m
-----	-------	---	--------

#### Thread

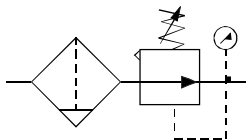
Nil	G	N	NPT
-----	---	---	-----

#### Port size

02	1/4	06	3/4
03	3/8	08	1
04	1/2		

Air Filter / Regulator

Symbol

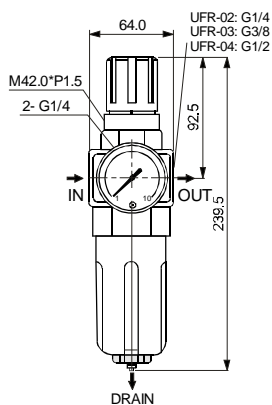


### ◆ Specifications

Model	UFR-02	UFR-03	UFR-04	UFR-06	UFR-08
Port size	1/4	3/8	1/2	3/4	1
Fluid	Air				
Construction	Piston type regulator				
Body material	Aluminum die-cast				
Bowl material	Polycarbonate(standard)				
Filtration	5 μ m(standard), 40 μ m(option)				
Set pressure range	0.05~0.99 MPa				
Max. Inlet pressure(standard)	1.2 MPa				
Max. Flow rate	2100	2130	2750	8000	8500
Ambient and fluid temperature	-10℃~60℃(No freezing)				
Filter bowl capacity	105cc		210cc		
Standard drain	Semi-automatic drain(below 0.05MPa)				
Net weight for standard	930g		1360g		
Accessories	1 Gauge, 1 bracket, 4 screw, 1 plug				

### ◆ Dimensions

UFR-02,03,04



UFR-06,08

