

# Standard Cylinder

Double Acting, Single Rod / Double Rod

## Series SU, SUD, SUJ

◆ How to Order

**SU** **50** **50** **25** **S** **LB**

**Mounting style**

**SU Series**

Nil	LB	FA	FB	CA
CB	TC	TC-M		
Available only for $\Phi 40 \sim \Phi 100$				

**SUD Series**

Nil	LB	FA	TC	TC-M
Available only for $\Phi 40 \sim \Phi 100$				

**SUJ Series**

Nil	LB	FA	TC	TC-M
Available only for $\Phi 40 \sim \Phi 100$				

**Magnet**

Nil	Without magnet	<b>S</b>	Built-in magnet
-----	----------------	----------	-----------------

**Adjustable stroke** (Only for SUJ Series)

<b>25</b>	<b>50</b>	<b>75</b>
-----------	-----------	-----------

**Cylinder stroke**

\* Refer to "Standard stroke" .

**Bore size (mm)**

<b>32</b>	<b>40</b>	<b>50</b>	<b>63</b>	<b>80</b>	<b>100</b>
-----------	-----------	-----------	-----------	-----------	------------

**Model**

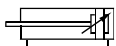
<b>SU</b>	Double acting, single rod	
<b>SUD</b>	Double rod type	<b>SUJ</b> Adjustable stroke type



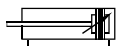
**SU Series**

Symbol

SU□-□



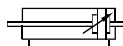
SU□-□-**S**



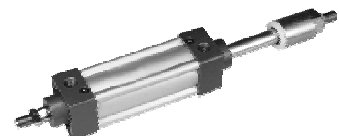
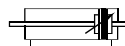
**SUD Series**

Symbol

SUD□-□



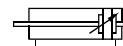
SUD□-□-**S**



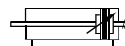
**SUJ Series**

Symbol

SUJ□-□



SUJ□-□-**S**



# Standard Cylinder Double Acting, Single Rod / Double Rod Series SU, SUD, SUJ



## ◆ Specifications

Bore size (mm)	32	40	50	63	80	100
Action	Double acting, single rod/double rod					
Fluid	Filtered compressed air					
Proof pressure	1.5 MPa					
Operating pressure range	0.1~0.9 MPa					
Ambient and fluid temperature	-5~70°C(No freezing)					
Port size	G1/8	G1/4		G3/8		G1/2
Piston rod thread	M10×1.25	M12×1.25	M16×1.5		M20×1.5	
Cushion	Adjustable air cushion at both ends					

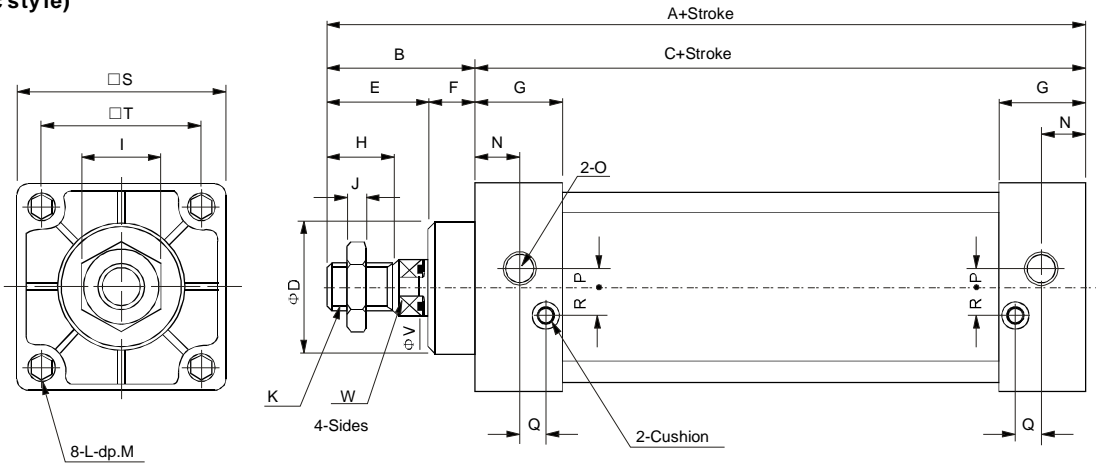
Note): Please contact with ANSSION for the mounting accessories.

## ◆ Standard Stroke

Series	Bore size (mm)	Standard stroke(mm)	Maximum stroke	Available stroke
SU	32	25 50 75 80 100 125 150 160 175 200 250 300 350 400 450 500	1000	2000
	40	25 50 75 80 100 125 150 160 175 200 250 300 350 400 450 500 600 700 800	1200	2000
	50	25 50 75 80 100 125 150 160 175 200 250 300 350 400 450 500 600 700 800 900 1000	1200	2000
	63~100	25 50 75 80 100 125 150 160 175 200 250 300 350 400 450 500 600 700 800 900 1000	1500	2000
SUD SUJ	32~63	25 50 75 80 100 125 150 160 175 200	200	300
	80~100	25 50 75 80 100 125 150 160 175 200 250 300	300	400

## ◆ Dimensions

SU□-□-**S**  
(Basic style)



Note): The dimensions of built-in magnet type cylinder are exactly the same as without-magnet type cylinder.

Bore size (mm)	A	B	C	D	E	F	G	H	I	J	K	L	M	N	O	P	Q	R	S	T	V	W
32	140	47	93	28	32	15	27.5	22	17	6	M10×1.25	M6×1.0	9.5	13.7	G1/8	3.5	7.5	7	45	33	12	10
40	142	49	93	32	34	15	27.5	24	17	7	M12×1.25	M6×1.0	9.5	13.5	G1/4	6	8.2	9	50	37	16	14
50	150	57	93	38	42	15	27.5	32	23	8	M16×1.5	M6×1.0	9.5	13.5	G1/4	8.5	8.2	9	62	47	20	17
63	153	57	96	38	42	15	27.5	32	23	8	M16×1.5	M8×1.25	9.5	13.5	G3/8	7	8.2	8.5	75	56	20	17
80	182	75	107	47	54	21	33	40	26	10	M20×1.5	M10×1.5	11.5	16.5	G3/8	10	9.5	14	94	70	25	22
100	188	75	113	47	54	21	33	40	26	10	M20×1.5	M10×1.5	11.5	16.5	G1/2	11	9.5	14	112	84	25	22

I

CJP

CJ1

DNC

DNCB

DNG

C95

SI

CS1

MB

**SU**

SC

DSNU

C85

CJ2

CM2

MA

MAL

ADVU

CQ2

CQS

SDA

CU

DPZ

CXS

TN

ADVUL

CQM

MGP

MGG

CRA 1

CY1B

CS  
Auto switch

D  
Auto switch

AC,AD

HR

RB

RBQ

