

Shock Absorber

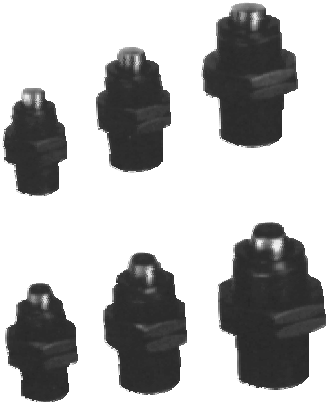
Short Type

Series RBQ



◆ How to Order

RB Q C 20 07



Option

Nil	None
S	With stopper nut
J	Add' 1 hex, nut(Total: 3pcs.*)

* 2 mounting hexagon nuts are attached as standard.

O.D thread-Stroke absorption

Bumper cannot be mounted for basic type. Please place an order with bumper type from the beginning.

Cushion

Nil	Basic type	C	With bumper
-----	------------	---	-------------

Short type

Replacement part no./Bumper

RBQC 16 C

Bumper

Applicable model

16	RBQC1604	20	RBQC2007
25	RBQC2508	30	RBQC3009
32	RBQC3213		

◆ Specifications

Model	Basic type	RBQ1604	RBQ2007	RBQ2508	RBQ3009	RBQ3213
	With cap	RBQC1604	RBQC2007	RBQC2508	RBQC3009	RBQC3213
Max. energy absorption (J)		1.96	11.8	19.6	33.3	49.0
Stroke absorption (mm)		4	7	8	8.5	13
Collision speed (m/s)		0.05~3				
Max. operating frequency*(cycle/min)		60	60	45	45	30
Max. allowable thrust (N)		294	490	686	981	1177
Ambient temperature range		-10~80°C (No freezing)				
Spring force(N)	Extended	6.08	12.75	15.69	21.57	24.52
	Retracted	13.45	27.75	37.85	44.23	54.23
Weight (g)		28	60	110	182	240
Option/Stopper nut		RBQ16S	RB20S	RBQ25S	RBQ30S	RBQ32S

* It denotes the values at the maximum energy absorption per one cycle. Therefore, the operating frequency can be increased according to the energy absorption.

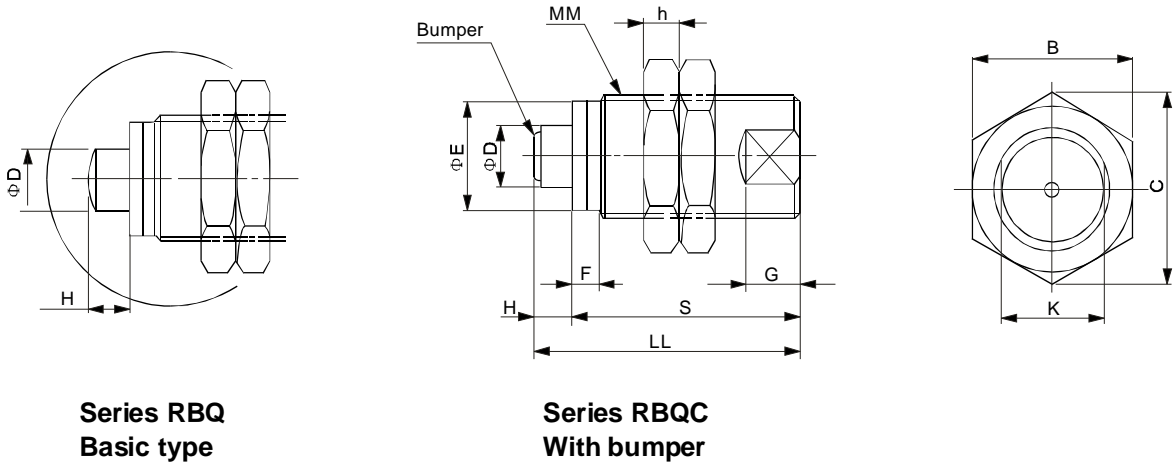
- I
- CJP
- CJ1
- DNC
- DNCB
- DNG
- C95
- SI
- CS1
- MB
- SU
- SC
- DSNU
- C85
- CJ2
- CM2
- MA
- MAL
- ADVU
- CQ2
- CQS
- SDA
- CU
- DPZ
- CXS
- TN
- ADVUL
- CQM
- MGP
- MGG
- CRA1
- CY1B
- CS
Auto switch
- D
Auto switch
- AC,AD
- HR
- RB
- RBQ

Shock Absorber

Short Type

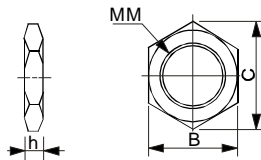
Series RBQ

◆ Dimensions

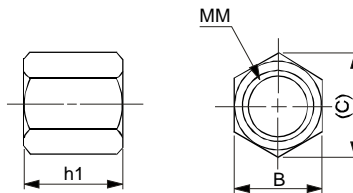


Model		Shock absorber									Hexagon nut		
Basic type	With bumper	D	E	F	H	K	G	LL	MM	S	B	C	h
RBQ1604	RBQC1604	6	14.2	3.5	4	14	7	31	M16×1.5	27	22	25.4	6
RBQ2007	RBQC2007	10	18.2	4	7	18	9	44.5	M20×1.5	37.5	27	31.2	6
RBQ2508	RBQC2508	12	23.2	4	8	23	10	52	M25×1.5	44	32	37	6
RBQ3009	RBQC3009	16	28.2	5	8.5	28	12	61.5	M30×1.5	53	41	47.3	6
RBQ3213	RBQC3213	18	30.2	5	13	30	13	76	M32×1.5	63	41	47.3	6

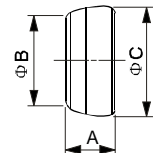
Hexagon Nut
(2 pcs. standard equipment)



Option Stopper nut



Replacement Parts Bumper



These are the replacement part for the cap type. Not available for the basic type.

Part no.	MM	h	B	C
RBQ16J	M16×1.5	6	22	25.4
RB20J ⁽¹⁾	M20×1.5	6	27	31.2
RBQ25J	M25×1.5	6	32	37
RBQ30J	M30×1.5	6	41	47.3
RBQ32J	M32×1.5	6	41	47.3

Note 1) In the case of RB20J, RB and RBQ are common.

Part no.	B	C	h1	MM
RBQ16S	22	25.4	12	M16×1.5
RB20S ⁽²⁾	27	31.2	16	M20×1.5
RBQ25S	32	37	18	M25×1.5
RBQ30S	41	47.3	20	M30×1.5
RBQ32S	41	47.3	25	M32×1.5

Note 2) In the case of RB20S, RB and RBQ are common.

Part no.	A	B	C
RBQC16C	3.5	4	4.7
RBQC20C	4.5	8	8.3
RBQC25C	5	8.3	9.3
RBQC30C	6	11.3	12.4
RBQC32C	6.6	13.1	14.4