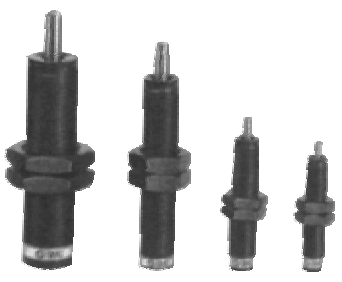


Shock Absorber Standard type Series RB



◆ How to Order

RB **C** **14** **12**



Basic type

Option

Nil	None
S	With stopper nut
J	Add' 1 hex, nut(Total: 3pcs.*)

* 2 mounting hexagon nuts are attached as standard.

O.D thread-Stroke absorption

Cushion

Nil	Basic type	C	With cap
-----	------------	----------	----------



With cap

Replacement part no./Cap(Resin part only)

RBC **08** **C**

Cap

Applicable model

08	RBC0805,0806	10	RBC1006,1007
14	RBC1411,1412	20	RBC2015
27	RBC2725		

* Cap cannot be mounted for basic type. Please place an order with cap type from the beginning.

◆ Specifications

Model	Basic type	RB0805	RB0806	RB1006	RB1007	RB1411	RB1412	RB2015	RB2725
	With cap	RBC0805	RBC0806	RBC1006	RBC1007	RBC1411	RBC1412	RBC2015	RBC2725
Max. energy absorption (J)		0.98	2.94	3.92	5.88	14.7	19.6	58.8	147
Stroke absorption (mm)		5	6	6	7	11	12	15	25
Collision speed (m/s)		0.05~ 5.0							
Max. operating frequency*(cycle/min)		80	80	70	70	45	45	25	10
Max. allowable thrust (N)		245	245	422	422	814	814	1961	2942
Ambient temperature range		-10~80°C (No freezing)							
Spring force(N)	Extended	1.96	1.96	4.22	4.22	6.86	6.86	8.34	8.83
	Retracted	3.83	4.22	6.18	6.86	15.30	15.98	20.50	20.01
Weight (g)	Basic type	15	15	23	23	65	65	150	350
	With cap	16	16	25	25	70	70	165	400

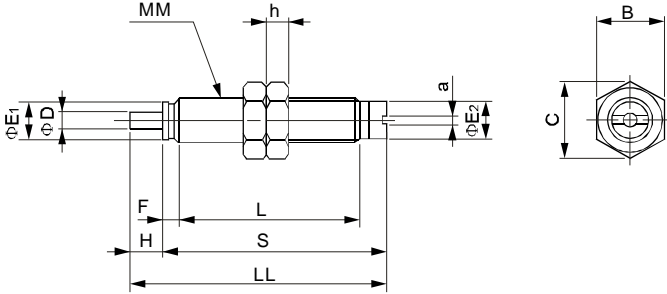
* It denotes the values at the maximum energy absorption per one cycle.
Max. operation cycle/min can increase in proportion to energy absorption.

I
CJP
CJ1
DNC
DNCB
DNG
C95
SI
CS1
MB
SU
SC
DSNU
C85
CJ2
CM2
MA
MAL
ADVU
CQ2
CQS
SDA
CU
DPZ
CXS
TN
ADVUL
CQM
MGP
MGG
CRA1
CY1B
CS Auto switch
D Auto switch
AC,AD
HR
RB
RBQ

Shock Absorber
Standard type
Series RB

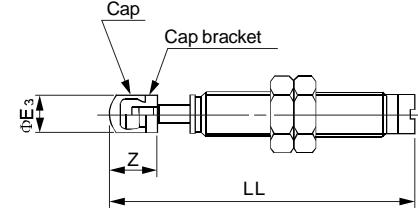
◆ **Dimensions**

Basic type: RB0805, RB0806, RB1006, RB1007



**With cap: RBC0805, RBC0806
RBC1006, RBC1007**

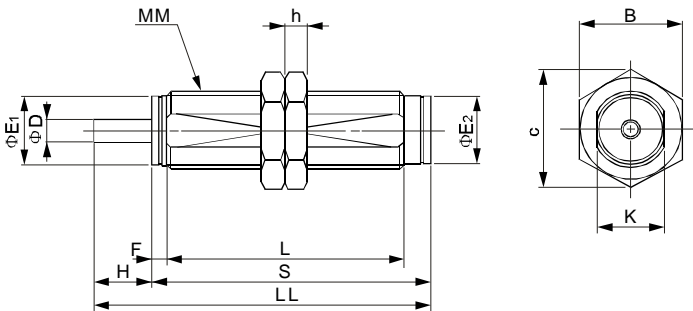
* Other dimensions are the same as the basic type.



(mm)

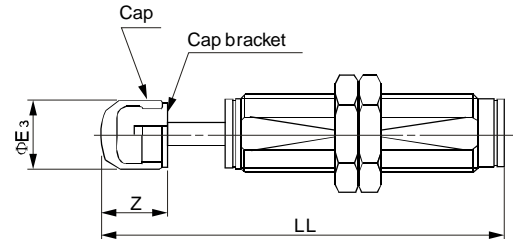
Model		Basic type dimensions								With cap*				Hexagon nut			
Basic type	With cap	D	E1	E2	F	H	a	L	LL	MM	S	E3	LL	Z	B	C	h
RB0805	RBC0805	2.8	6.8	6.8	2.4	5	1.4	33.4	45.8	M8×1.0	40.8	6.8	54.3	8.5	12	13.9	4
RB0806	RBC0806	2.8	6.8	6.8	2.4	6	1.4	33.4	46.8	M8×1.0	40.8	6.8	55.3	8.5	12	13.9	4
RB1006	RBC1006	3	8.8	8.6	2.7	6	1.4	39	52.7	M10×1.0	46.7	8.7	62.7	10	14	16.2	4
RB1007	RBC1007	3	8.8	8.6	2.7	7	1.4	39	53.7	M10×1.0	46.7	8.7	63.7	10	14	16.2	4

Basic type: RB1411, RB1412, RB2015, RB2725



**With cap: RBC1411, RBC1412
RBC2015, RBC2725**

* Other dimensions are the same as the basic type.

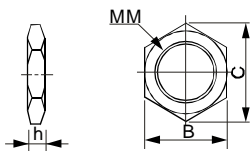


(mm)

Model		Basic type dimensions								With cap*				Hexagon nut			
Basic type	With cap	D	E1	E2	F	H	K	L	LL	MM	S	E3	LL	Z	B	C	h
RB1411	RBC1411	5	12.2	12	3.5	11	12	58.8	78.3	M14×1.5	67.3	12	91.8	13.5	19	21.9	6
RB1412	RBC1412	5	12.2	12	3.5	12	12	58.8	79.3	M14×1.5	67.3	12	92.8	13.5	19	21.9	6
RB2015	RBC2015	6	18.2	18	4	15	18	62.2	88.2	M20×1.5	73.2	18	105.2	17	27	31.2	6
RB2725	RBC2725	8	25.2	25	5	25	25	86	124	M27×1.5	99	25	147	23	36	41.6	6

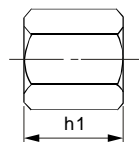
Hexagon Nut

(2 pcs. standard equipment)

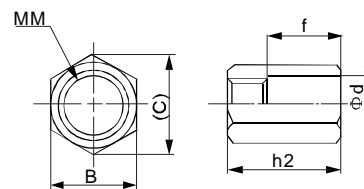


Option

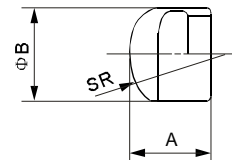
Stopper nut
For basic type



For cap type



Replacement Parts
Cap



These are the replacement part for the cap type. Not available for the basic type.

(mm)

Part no.	Dimensions			
	MM	h	B	C
RB08J	M8×1.0	4	12	13.9
RB10J	M10×1.0	4	14	16.2
RB14J	M14×1.5	6	19	21.9
RB20J	M20×1.5	6	27	31.2
RB27J	M27×1.5	6	36	41.6

(mm)

Part no.		Dimensions						
Basic type	With cap	B	C	h1	h2	MM	d	f
RB08S	RBC08S	12	13.9	6.5	23	M8×1.0	9	15
RB10S	RBC10S	14	16.2	8	23	M10×1.0	11	15
RB14S	RBC14S	19	21.9	11	31	M14×1.5	15	20
RB20S	RBC20S	27	31.2	16	40	M20×1.5	23	25
RB27S	RBC27S	36	41.6	22	51	M27×1.5	32	33

Material: Polyurethane (mm)

Part no.	Dimensions		
	A	B	SR
RBC08C	6.5	6.8	6
RBC10C	9	8.7	7.5
RBC14C	12.5	12	10
RBC20C	16	18	20
RBC27C	21	25	25