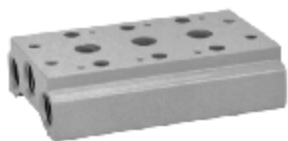


## Manifold

# For Series 4V, VF, SY

### ◆ How to order



100M - 02 F

#### Stations

<b>100M</b>	01 to 16 stations	<b>200M</b>	01 to 16 stations
<b>300M</b>	01 to 12 stations	<b>400M</b>	01 to 07 stations

#### Manifold type

<b>100M</b>	For 4V100 series
<b>200M</b>	For 4V200 series
<b>300M</b>	For 4V300 series
<b>400M</b>	For 4V400 series



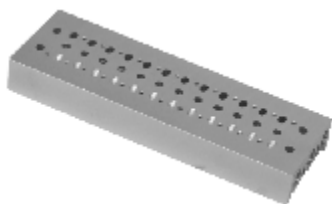
MVF3000 - 02 F

#### Stations

<b>MVF3000</b>	02 to 20 stations
<b>MVF5000</b>	02 to 10 stations

#### Manifold type

<b>MVF3000</b>	For VF3000 (Body ported type) series
<b>MVF5000</b>	For VF5000 (Body ported type) series



MSY3000 - 02 F

#### Stations

<b>MSY3000</b>	02 to 20 stations
<b>MSY5000</b>	02 to 20 stations
<b>MSY7000</b>	02 to 20 stations

#### Manifold type

<b>MSY3000</b>	SY3000 (Body ported type) series
<b>MSY5000</b>	SY5000 (Body ported type) series
<b>MSY7000</b>	SY7000 (Body ported type) series