

# 3/5 Port Mechanical Valve Series MSV

**ANSSION**  
PNEUMATIC & HYDRAULIC

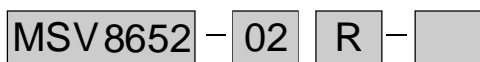


MSV9832-02 MSV9832-02PP MSV9832-02PPL MSV9832-02EB MSV9832-02PB MSV9832-02LB MSV9832-02TB MSV9832-02R



MSV8652-02 MSV8652-02PP MSV8652-02PPL MSV8652-02EB MSV8652-02PB MSV8652-02LB MSV8652-02TB MSV8652-02R

### ◆ How to Order



#### Operator Color

Nil	Standard color (Black: TB, LB ; RED: PB, PP, PPL, EB)		
G	Green( PB, PP, PPL)		
B	Black( PB, PP, PPL)		
Y	Yellow( PB, PP, PPL)		

#### Button type

Nil	Basic type	PB	Palm button (Mushroom)
PP	Palm button (Flush)	LB	Long twist selector
PPL	Palm button (Extended)	TB	Twist selector
EB	Stop lock button	R	Roller

#### Port size

MSV8652	01	1/8	02	1/4
MSV9832	02	1/4		

#### Model

MSV8652	5 port 2 position
MSV9832	3 port 2 position

### ◆ Specifications

Model	MSV9832-02	MSV8652-01	MSV8652-02
Fluid	Air		
Type of actuation	3 port 2 position	5 port 2 position	
Operating pressure range	0~0.8 MPa		
Ambient and fluid temperature	0~60°C		
Port size	1/4	1/8	1/4

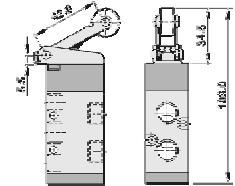
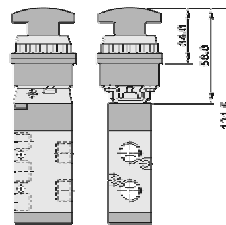
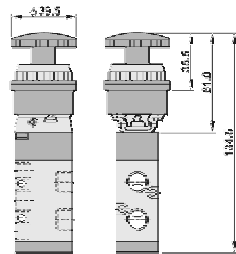
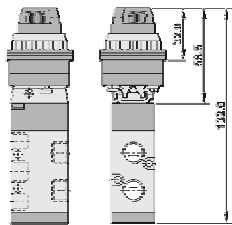
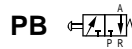
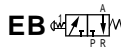
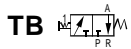
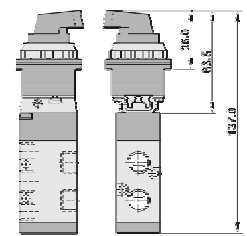
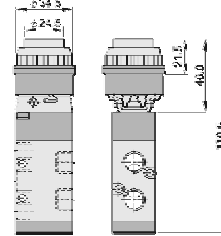
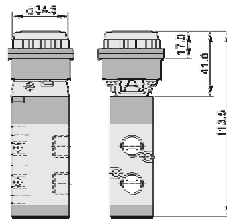
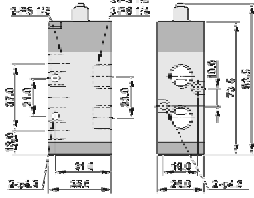
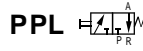
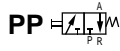
## II

- VF
- SY
- SYJ
- 4V100
- 4V200
- 4V300
- 4V400
- VT307
- VP
- 3V
- 2W
- 2WH
- 2L
- 2V
- 2P
- VFA
- SYA
- 4A100
- 4A200
- 4A300
- 3A100
- 3A200
- 3A300
- 3L
- 4L
- 4H
- SL,SH
- 4HV
- HV,K
- 3FM
- 3F
- 4F
- FV**
- MSV**
- MOV
- JM
- TAC
- HSV
- RE
- ASC
- KA
- ACV
- KS
- QE
- Manifold

# 3/5 Port Mechanical Valve Series MSV

◆ Dimensions

**MSV8652-01,02**



**MSV9832-02**

