

Standard Cylinder

Double Acting, Single Rod / Double Rod

Series MB, MBW

◆ How to Order

M **D** **B** **W** **B** 32 — 150

Cylinder stroke
* Refer to "Standard stroke" .

Port thread type

Symbol	Nil	TN	TF
Type	Rc	NPT	G

Bore size (mm)

32	40	50	63	80	100	125
-----------	-----------	-----------	-----------	-----------	------------	------------

Mounting style

B	Basic / Without bracket	L	Axial foot
F	Rod side flange	G	Head side flange
C	Single clevis	D	Double clevis
T	Center trunnion		

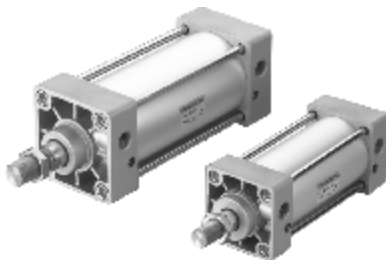
*"G, C, D" Only for MB, MDB Series.

Piston Rod

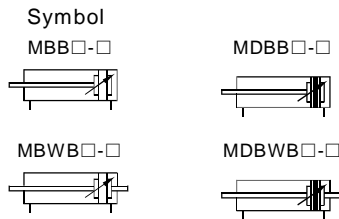
Nil	Single rod	W	Double rod
------------	------------	----------	------------

Magnet

Nil	Without magnet	D	Built-in magnet
------------	----------------	----------	-----------------



MB Series



◆ Specifications

Bore size (mm)	32	40	50	63	80	100	125
Action	Double acting, single rod / double rod						
Fluid	Filtered compressed air						
Proof pressure	1.5 MPa						
Operating pressure range	0.05~1.0 MPa						
Ambient and fluid temperature	-10~70°C (No freezing)						
Port size (Rc, NPT, G)	1/8	1/4	3/8		1/2		
Piston rod thread	M10×1.25	M14×1.5	M18×1.5	M22×1.5	M26×1.5	M27×2.0	
Cushion	Adjustable air cushion at both ends						

Note): Please contact with ANSSION for the mounting accessories.

Standard Cylinder

Double Acting, Single Rod / Double Rod

Series MB, MBW



◆ Standard Stroke

Bore size(mm)	Standard stroke (mm)	Max.stroke
32	25, 50, 75, 100, 125, 150, 175, 200, 250, 300, 350, 400, 450, 500	700
40	25, 50, 75, 100, 125, 150, 175, 200, 250, 300, 350, 400, 450, 500	800
50	25, 50, 75, 100, 125, 150, 175, 200, 250, 300, 350, 400, 450, 500, 600	1200
63	25, 50, 75, 100, 125, 150, 175, 200, 250, 300, 350, 400, 450, 500, 600	1200
80	25, 50, 75, 100, 125, 150, 175, 200, 250, 300, 350, 400, 450, 500, 600, 700, 800	1400
100	25, 50, 75, 100, 125, 150, 175, 200, 250, 300, 350, 400, 450, 500, 600, 700, 800	1500
125	25, 50, 75, 100, 125, 150, 175, 200, 250, 300, 350, 400, 450, 500, 600, 700, 800	1500

* Intermediate strokes are available. (No spacer is used.)

◆ Dimensions (Without Mounting Bracket)

M(D)BB□-□ (Basic style)

* The dimensions of built-in magnet type cylinder are exactly the same as without-magnet type cylinder.

Bore size (mm)	Stroke range (mm)	Effective thread length	Width across flats	A	B	C	D	Ee11	F	G	H	MA	MB	J	K	MM	N	P	S	V	W	ZZ
32	to 500	19.5	10	22	46	32.5	12	30	13	13	47	16	4	M6×1	6	M10×1.25	27	1/8	84	4	6.5	135
40	to 500	27	14	30	52	38	16	35	13	14	51	16	4	M6×1	6	M14×1.5	27	1/4	84	4	9	139
50	to 600	32	18	35	65	46.5	20	40	14	15.5	58	16	5	M8×1.25	7	M18×1.5	31.5	1/4	94	5	10.5	156
63	to 600	32	18	35	75	56.5	20	45	14	16.5	58	16	5	M8×1.25	7	M18×1.5	31.5	3/8	94	9	12	156
80	to 800	37	22	40	95	72	25	45	20	19	72	16	5	M10×1.5	10	M22×1.5	38	3/8	114	11.5	14	190
100	to 800	37	26	40	114	89	30	55	20	19	72	16	5	M10×1.5	10	M26×1.5	38	1/2	114	17	15	190
125	to 1000	50	27	54	136	110	32	60	27	19	97	20	6	M12×1.75	13	M27×2.0	38	1/2	120	17	16	223

M(D)BWB□-□ (Double rod style)

* The dimensions of built-in magnet type cylinder are exactly the same as without-magnet type cylinder.

Bore size (mm)	Stroke range	Eff. thread length	Width across flats	A	B	C	D	Ee11	F	G	H	MA	MB	J	K	MM	N	P	S	V	W	ZZ
32	to 500	19.5	10	22	46	32.5	12	30	13	13	47	16	4	M6×1.0	6	M10×1.25	27	1/8	84	4	6.5	178
40	to 500	27	14	30	52	38	16	35	13	14	51	16	4	M6×1.0	6	M14×1.5	27	1/4	84	4	9	186
50	to 600	32	18	35	65	46.5	20	40	14	15.5	58	16	5	M8×1.25	7	M18×1.5	31.5	1/4	94	5	10.5	210
63	to 600	32	18	35	75	56.5	20	45	14	16.5	58	16	5	M8×1.25	7	M18×1.5	31.5	3/8	94	9	12	210
80	to 800	37	22	40	95	72	25	45	20	19	72	16	5	M10×1.5	10	M22×1.5	38	3/8	114	11.5	14	258
100	to 800	37	26	40	114	89	30	55	20	19	72	16	5	M10×1.5	10	M26×1.5	38	1/2	114	17	15	258
125	to 1000	50	27	54	136	110	32	60	27	19	97	20	6	M12×1.75	13	M27×2.0	38	1/2	120	17	15	314

- I
- CJP
- CJ1
- DNC
- DNCB
- DNG
- C95
- SI
- CS1
- MB**
- SU
- SC
- DSNU
- C85
- CJ2
- CM2
- MA
- MAL
- ADVU
- CQ2
- CQS
- SDA
- CU
- DPZ
- CXS
- TN
- ADVUL
- CQM
- MGP
- MGG
- CRA1
- CY1B
- CS Auto switch
- D Auto switch
- AC,AD
- HR
- RB
- RBQ