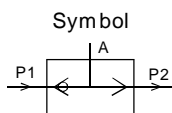


Shuttle Valve Series KS



◆ How to Order

KS - 01

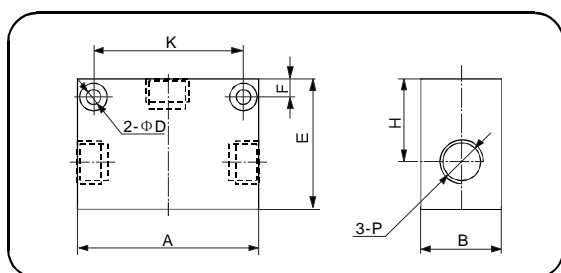
Port size

01	1/8	02	1/4	03	3/8
04	1/2	06	3/4	10	1

Model

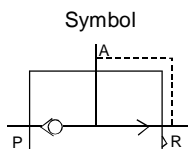
KS	Shuttle Valve
----	---------------

◆ Dimensions



Model	A	B	D	E	F	H	K	P
KS-01	56	25	4.8	40	9	26	36	1/8
KS-02	56	25	4.8	40	9	26	36	1/4
KS-03	70	34	7	50	10	32	48	3/8
KS-04	70	34	7	50	10	32	48	1/2
KS-06	95	50	7	75	10	48	72	3/4
KS-10	95	50	7	75	10	48	72	1

Quick Exhaust Valve Series QE



◆ How to Order

QE - 01

Port size

01	1/8	02	1/4	03	3/8
04	1/2	06	3/4		

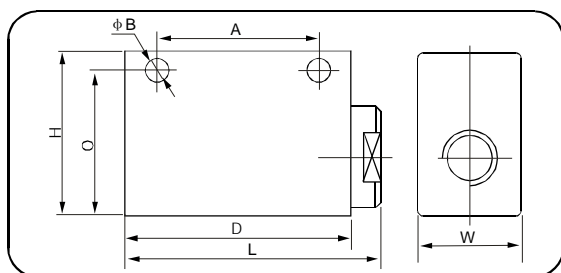
Model

QE	Quick Exhaust Valve
----	---------------------

◆ Specifications

Model	QE-01	QE-02	QE-03	QE-04	QE-06
Fluid	Air				
Port size	1/8	1/4	3/8	1/2	3/4
Operating pressure range	0-1.0 MPa				
Ambient and fluid temperature	0-60°C				

◆ Dimensions



Type	Bore	L	W	H	A	B	C	D
QE-01	1/8	46	20	32	30	4.3	27	40
QE-02	1/4	62	25	40	39	5.6	33.5	55
QE-03	3/8	62	25	40	39	5.6	33.5	55
QE-04	1/2	98	38	64	60	8.5	51	90
QE-06	3/4	98	38	64	60	8.5	51	90

II

- VF
- SY
- SYJ
- 4V100
- 4V200
- 4V300
- 4V400
- VT307
- VP
- 3V
- 2W
- 2WH
- 2L
- 2V
- 2P
- VFA
- SYA
- 4A100
- 4A200
- 4A300
- 3A100
- 3A200
- 3A300
- 3L
- 4L
- 4H
- SL,SH
- 4HV
- HV,K
- 3FM
- 3F
- 4F
- FV
- MSV
- MOV
- JM
- TAC
- HSV
- RE
- ASC
- KA
- ACV
- KS
- QE
- Manifold