

Rodless Cylinder

Basic Type

Series CY1B

◆ How to Order

 CY1 B 25 H - 300


Standard stroke

* Refer to "standard stroke" .

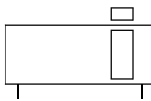
Magnetic holding force

* Refer to "magnet holding force" .

Bore size

6	10	15	20	25
32	40	50	63	

Symbol



◆ Specifications

	6	10	15	20	25	32	40	50	63
Fluid	Filtered compressed air								
Proof pressure	1.05 MPa								
Operating pressure range	0.18 ~0.7 MPa								
Ambient and fluid temperature	-10~60℃ (No freezing)								
Piston speed	50~400 mm/s								
Port size	M5×0.8			Rc1/8			Rc1/4		
Cushion	Rubber bumpers at both ends								
Mounting orientation	Unrestricted								
Mounting nuts(2pcs.)	Standard equipment(Accessory)								

◆ Standard Stroke

Bore size (mm)	Standard stroke(mm)	Maximum ⁽¹⁾ available stroke(mm)
6	50,100,150,200	300
10	50,100,150,200,250,300	500
15	50,100,150,200,250,300,350,400,450,500	1000
20	100,150,200,250,300,350,400,450,500,600,700,800	2000
25		4000
32		5000
40	100,150,200,250,300,350,400,450,500,600,700,800,900,1000	5000
50		6000
63		6000

Note 1): Contact AIRBEST if the maximum stroke will be exceeded.

◆ Magnetic Holding Force(N)

Bore size(mm)		6	10	15	20	25	32	40	50	63
Holding force	H type	19.6	53.9	137	231	363	588	922	1471	2256
	L type	-	-	81.4	154	221	358	569	863	1373

Rodless Cylinder Basic Type Series CY1B

ANSSION
PNEUMATIC & HYDRAULIC

◆ **Dimensions (Basic Type)**

CY1B□H□ φ 6 to 15
(Basic style)

Model	Port size	D	B	F	G	H	K	L	N	NA	MM×J	NN	S	W	X	ZZ
CY1B6	M5×0.8	7.6	17	9	5	14	5	35	10	14	M3×0.5×4.5	M10×1.0	63	25	10	81
CY1B10	M5×0.8	12	25	9	5	12.5	4	38	11	14	M3×0.5×4.5	M10×1.0	63	30	16	81
CY1B15	M5×0.8	17	35	10	5.5	13	11	57	11	17	M4×0.7×6	M10×1.0	83	35	19	103

(mm)

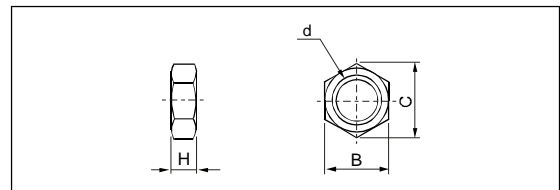
CY1B□H□ φ 20 to 40
(Basic style)

CY1B□H□ φ 50, 63
(Basic style)

Model	Port size	B	C	D	E	F	G	H	I	K	L	MM×J	N	NA	NB	NN
CY1B20	Rc(PT)1/8	36	-	22.7	-	13	8	20	28	8	66	M4×0.7×6	15	24	13	M20×1.5
CY1B25	Rc(PT)1/8	46	-	27.8	-	13	8	20.5	34	10	70	M5×0.8×8	15	30	13	M26×1.5
CY1B32	Rc(PT)1/8	60	-	35	-	16	9	22	40	15	80	M6×1.0×8	17	36	15	M26×1.5
CY1B40	Rc(PT)1/4	70	-	43	-	16	11	29	50	16	92	M6×1.0×10	21	46	19	M32×2.0
CY1B50	Rc(PT)1/4	86	32	53	30 ^{-0.007} -0.037	2	14	33	58.2	25	110	M8×1.25×12	25	55	23	-
CY1B63	Rc(PT)1/4	100	38	66	32 ^{-0.007} -0.043	2	14	33	72.2	26	122	M8×1.25×12	25	69	23	-

Model	Q X R	S	TB	TC X R	W	X	ZZ
CY1B20	-	106	-	-	50	25	132
CY1B25	-	111	-	-	50	30	137
CY1B32	-	124	-	-	50	40	156
CY1B40	-	150	-	-	60	40	182
CY1B50	M8×1.25×16	176	14	M12×1.25×7.5	60	60	180
CY1B63	M10×1.5×16	188	14	M14×1.5×11.5	70	70	192

Mounting nut included (2 pcs.) (except for φ 50 and φ 63)



Part No.	Bore size(mm)	d	H	B	C
SNJ-016B	6,10,15	M10×1.0	4	14	16.2
SN-020B	20	M20×1.5	8	26	30
SN-032B	25,32	M26×1.5	8	32	37
SN-040B	40	M32×2.0	10	41	47.3

I

CJP

CJ1

DNC

DNCB

DNG

C95

SI

CS1

MB

SU

SC

DSNU

C85

CJ2

CM2

MA

MAL

ADVU

CQ2

CQS

SDA

CU

DPZ

CXS

TN

ADVUL

CQM

MGP

MGG

CRA1

CY1B

CS

Auto switch

D

Auto switch

AC,AD

HR

RB

RBQ