

Free Mount Cylinder

Double Acting, Single Rod; Single Acting, Spring Return / Extend

Series CU



◆ How to Order

C D U 10 15 D

Action

D	Double acting
S	Single acting, spring return
T	Single acting, spring extend

Cylinder stroke

* Refer to "Standard stroke" .

Port thread type

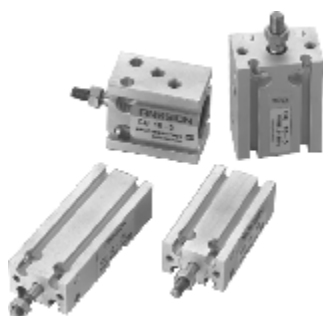
Symbol	Type	Bore size
Nil	M5×0.8	Φ6, Φ10, Φ16, Φ20, Φ25
	Rc1/8	Φ32
TN	NPT1/8	Φ32
TF	G1/8	Φ32

Bore size (mm)

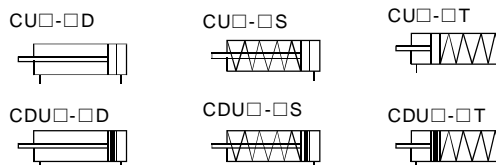
6	10	16	20	25	32
---	----	----	----	----	----

Magnet

Nil	Without magnet	D	Built-in magnet
------------	----------------	----------	-----------------



Symbol



◆ Specifications

Bore size (mm)		6	10	16	20	25	32
Action	C(D)U□-□D	Double acting, single rod					
	C(D)U□-□S/T	Single acting, spring return / extend					
Fluid		Filtered compressed air					
Proof pressure		1.05 MPa					
Operating pressure range	C(D)U□-□D	0.12~0.7MPa	0.06~0.7 MPa		0.05~0.7 MPa		
	C(D)U□-□S/T	0.2~0.7 MPa	0.15~0.7 MPa		0.13~0.7MPa		
Ambient and fluid temperature		-10~70°C (No freezing)					
Port size(RC,G,NPT)		M5×0.8					1/8
Piston rod thread (male thread)		M3×0.5	M4×0.7	M5×0.8	M6×1.0	M8×1.25	M10×1.25
Cushion		Rubber bumper					

◆ Standard Stroke

Bore size (mm)	Standard stroke (mm)	
	Double acting, single rod	Single acting, spring return / extend
6,10,16	5, 10, 15, 20, 25, 30	5, 10, 15
20,25,32	5, 10, 15, 20, 25, 30, 40, 50	

- I
- CJP
- CJ1
- DNC
- DNCB
- DNG
- C95
- SI
- CS1
- MB
- SU
- SC
- DSNU
- C85
- CJ2
- CM2
- MA
- MAL
- ADVU
- CQ2
- CQS
- SDA
- CU**
- DPZ
- CXS
- TN
- ADVUL
- CQM
- MGP
- MGG
- CRA1
- CY1B
- CS
Auto switch
- D
Auto switch
- AC,AD
- HR
- RB
- RBQ

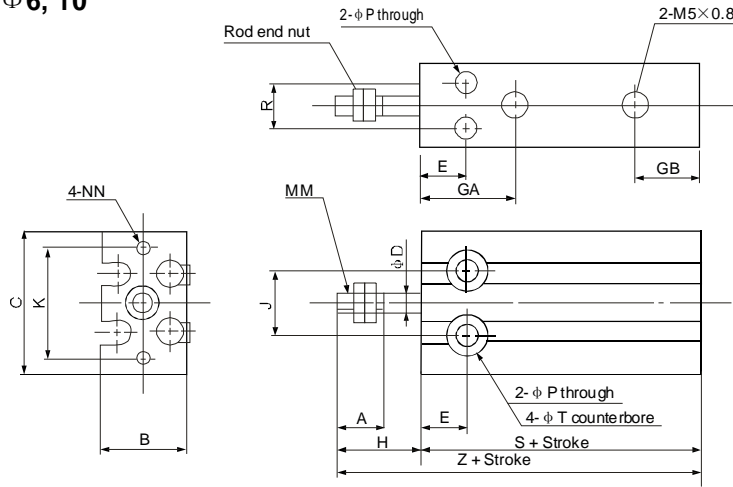
Free Mount Cylinder

Double Acting, Single Rod; Single Acting, Spring Return / Extend

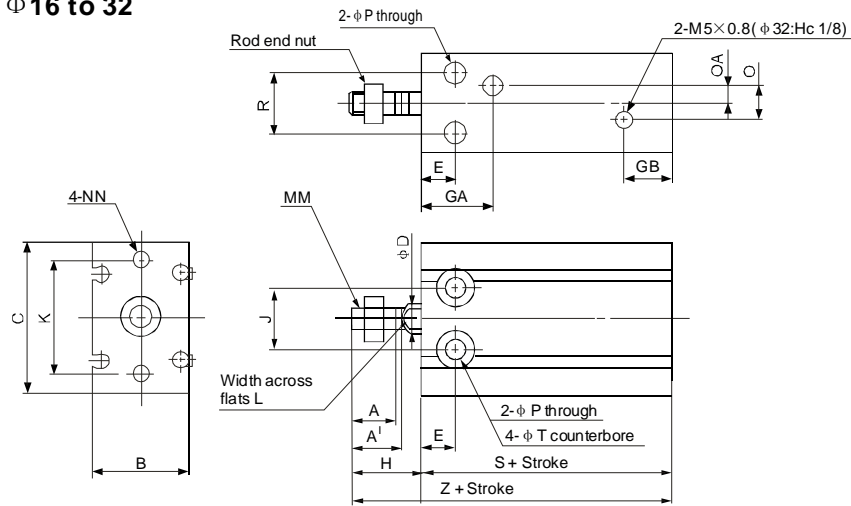
Series CU

◆ Dimensions

C(D)U□-□D Φ 6, 10
(Basic style)



C(D)U□-□□ Φ 16 to 32
(Basic style)



Bore size(mm)	A	A'	B	C	D	E	GA	GB	H	K	J	L	MM
6	7	-	13	22	3	7	15	10	13	17	10	-	M3×0.5
10	10	-	15	24	4	7	16.5	10	16	18	11	-	M4×0.7
16	11	12.5	20	32	6	7	16.5 ^(Note)	11.5	16	25	14	5	M5×0.8
20	12	14	26	40	8	9	19	12.5	19	30	16	6	M6×1.0
25	15.5	18	32	50	10	10	21.5	13	23	38	20	8	M8×1.25
32	19.5	22	40	62	12	11	23	12.5	27	48	24	10	M10×1.25

Note): 5 stroke (CU16-5D): 14.5 mm

Bore size(mm)	NN	P	Q	QA	R	T	Without magnet		Built-in magnet	
							S	Z	S	Z
6	M3×0.5 depth 5	3.2	-	-	7	6 depth 4.8	33	46	33	46
10	M3×0.5 depth 5	3.2	-	-	9	6 depth 5	36	52	36	52
16	M4×0.7 depth 6	4.5	4	2	12	7.6 depth 6.5	30	46	40	56
20	M5×0.8 depth 8	5.5	9	4.5	16	9.3 depth 8	36	55	46	65
25	M5×0.8 depth 8	5.5	9	4.5	20	9.3 depth 9	40	63	50	73
32	M6×1.0 depth 9	6.6	13.5	4.5	24	11 depth 11.5	42	69	52	79

Free Mount Cylinder

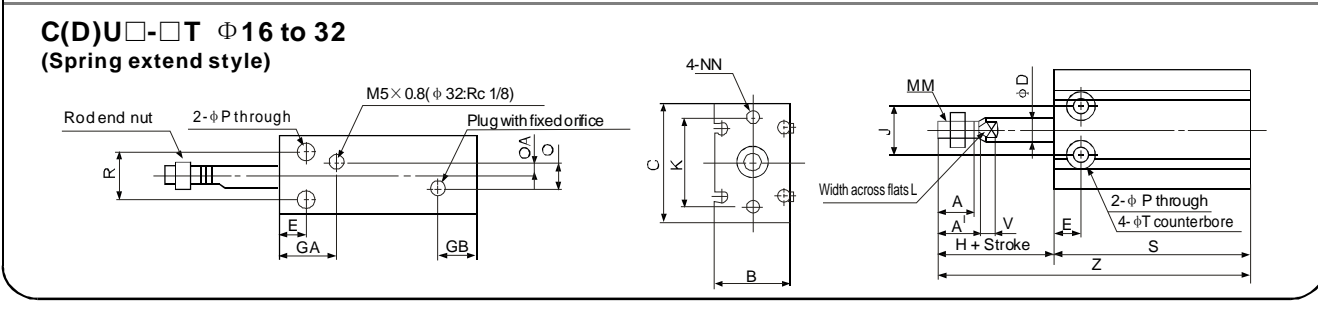
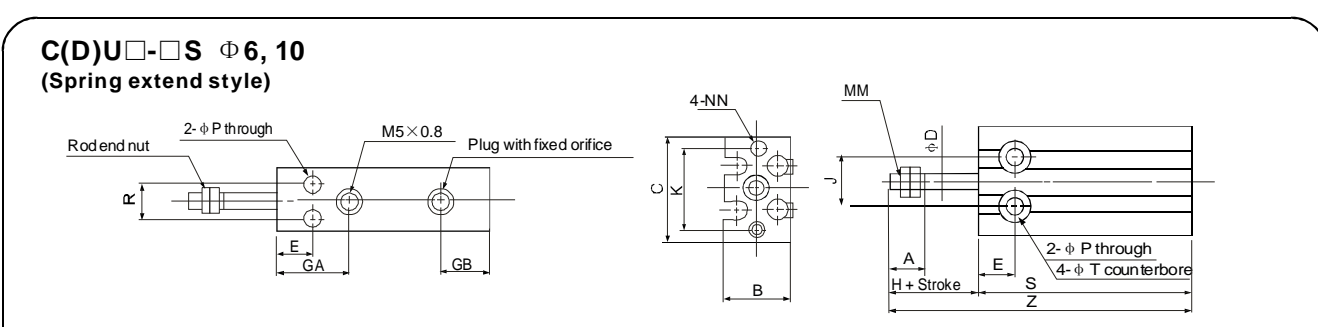
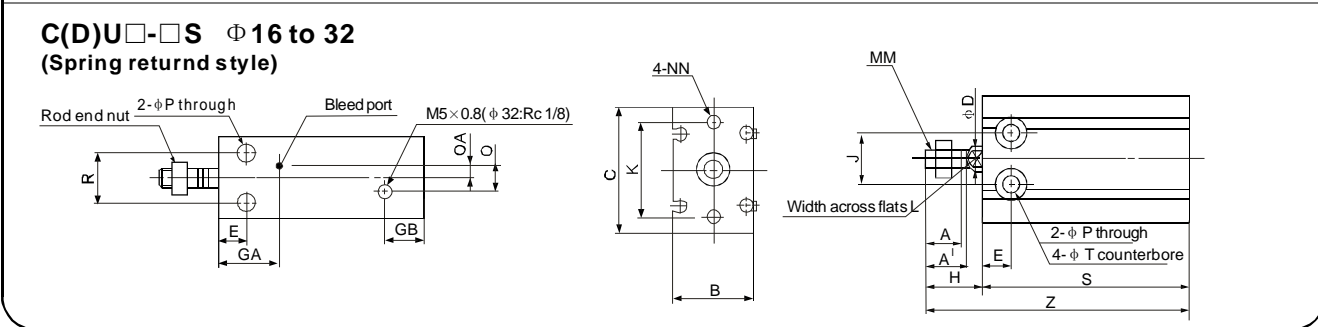
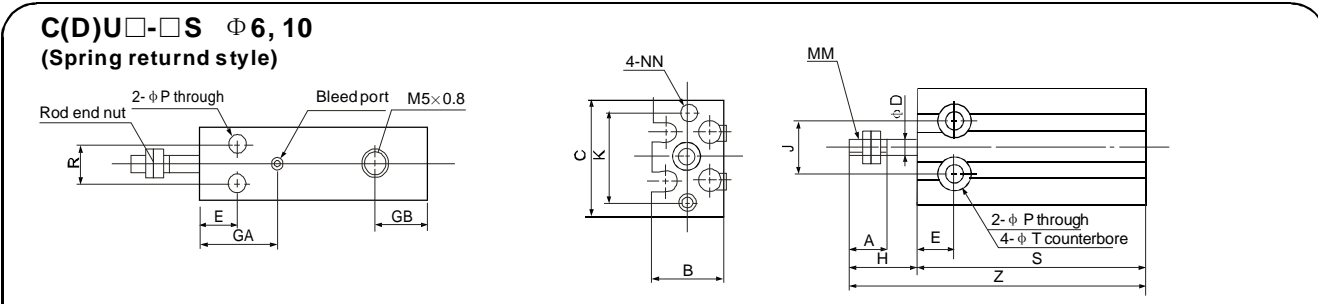
Double Acting, Single Rod; Single Acting, Spring Return / Extend

Series CU



I

- CJP
- CJ1
- DNC
- DNCB
- DNG
- C95
- SI
- CS1
- MB
- SU
- SC
- DSNU
- C85
- CJ2
- CM2
- MA
- MAL
- ADVU
- CQ2
- CQS
- SDA
- CU**
- DPZ
- CXS
- TN
- ADVUL
- CQM
- MGP
- MGG
- CRA1
- CY1B
- CS
Auto switch
- D
Auto switch
- AC,AD
- HR
- RB
- RBQ



Bore size(mm)	A	A'	B	C	D	E	GA	GB	H	J	K	L	MM	NN	P
6	7	-	13	22	3	7	15	10	13	10	17	-	M3×0.5	M3×0.5 depth 5	3.2
10	10	-	15	24	4	7	16.5	10	16	11	18	-	M4×0.7	M3×0.5 depth 5	3.2
16	11	12.5	20	32	6	7	16.5	11.5	16	14	25	5	M5×0.8	M4×0.7 depth 6	4.5
20	12	14	26	40	8	9	19	12.5	19	16	30	6	M6×1.0	M5×0.8 depth 8	5.5
25	15.5	18	32	50	10	10	21.5	13	23	20	38	8	M8×1.25	M5×0.8 depth 8	5.5
32	19.5	22	40	62	12	11	23	12.5	27	24	48	10	M10×1.25	M6×1.0 depth 9	6.6

Bore size (mm)	Q	QA	R	T	V ^(Note)	Without magnet						Built-in magnet					
						S			Z			S			Z		
						5 ST	10 ST	15 ST	5 ST	10 ST	15 ST	5 ST	10 ST	15 ST	5 ST	10 ST	15 ST
6	-	-	7	6 depth 4.8	-	38	43	48	56(51)	66(56)	76(61)	38	43	48	56(51)	66(56)	76(61)
10	-	-	9	6 depth 5	-	41	46	56	62(57)	72(62)	87(72)	41	46	56	62(57)	72(62)	87(72)
16	4	2	12	7.6 depth 6.5	3.5	45	50	60	66(51)	76(56)	91(66)	45	50	60	66(61)	76(66)	91(76)
20	9	4.5	16	9.3 depth 8	5	41	46	56	65(60)	75(65)	90(75)	51	56	66	75(70)	85(75)	100(85)
25	9	4.5	20	9.3 depth 9	5	45	50	60	73(68)	83(73)	98(83)	55	60	70	83(78)	93(83)	108(93)
32	13.5	4.5	24	11 depth 11.5	5	47	52	62	79(74)	89(79)	104(89)	57	62	72	89(84)	99(89)	114(99)

Note: "V" Only for Single Acting, Spring Extend,()means the dimensions of single acting, spring return.