

Shock Absorber

Series AC, AD



◆ How to Order

AC - 14 16 - 1 - N

Cap

Nil	With cap	N	Without cap
-----	----------	---	-------------

Collision speed

1	high speed	2	mid speed	3	low speed
---	------------	---	-----------	---	-----------

Stroke absorption

O.D. thread

Series

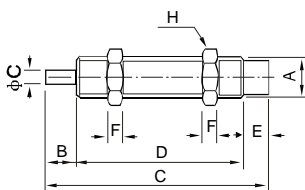
AC	Sely expiation type
AD	Adjustment type

◆ Specifications

Item	Stroke (mm)	Max.energy absorpthon (Nm)	Hour.energy absorpthon (Nm)	Max.effective weight(kg)			Max.codlision speed(m/s)			Ambient and fluid temperature	Weight (g)
				1	2	3	1	2	3		
AC-0806	6	2	1200	0.5	2	6	2	1	0.5	-10~80°C	11
AC-1005	5	3	3600	1	3	7	3	1.5	0.8	-10~80°C	14
AC-1008	8	4	5000	2	4	9	3	1.5	0.8	-10~80°C	20
AC-1210	10	5	10000	5	10	30	2	1.5	0.8	-10~80°C	31.5
AC-1412	12	15	30000	8	50	100	3	1.5	0.8	-10~80°C	80
AC-1416	16	20	35000	10	70	150	3	1.5	0.8	-10~80°C	90
AC-2020	20	40	40000	30	200	700	3.5	2	1	-10~80°C	215
AC-2050	50	60	60000	60	400	1200	3.5	2	1	-10~80°C	300
AC-2525	25	80	70000	200	800	1500	4	2.5	1	-10~80°C	330
AC-2540	40	120	75000	300	1200	2000	4	2.5	1	-10~80°C	430
AC-3660	60	250	120000	400	1500	2400	4	2.5	1	-10~80°C	1030
AD-1410	10	20	25000	80			3			-10~80°C	90
AD-2016	16	25	30000	200			3.5			-10~80°C	230
AD-2525	25	85	70000	400			3.5			-10~80°C	350
AD-2540	40	100	80000	700			3.5			-10~80°C	455
AD-3650	50	300	100000	1400			3			-10~80°C	1100
AD-4225	25	260	125000	3000			3.5			-10~80°C	1280
AD-4250	50	500	150000	4000			4.5			-10~80°C	1495
AD-4275	75	750	180000	6000			4.5			-10~80°C	1710
AD-6450	50	12000	1500000	12727			1.5			-10~80°C	4115
AD-64100	100	24000	2000000	18181			1.5			-10~80°C	5280
AD-64150	150	36000	2500000	23636			1.5			-10~80°C	6785

◆ Dimensions

Without cap

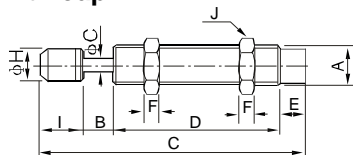


Model/Symbol	A	B	C	D	E	F	G	H
AC-0806	M8×1.0	6	44	33	5	3	2.8	11
AC-1005	M10×1.0	5	32.7	22.9	4.8	3	3	12.7
AC-1008	M10×1.0	8	51	38	5	3	3	12.7
AC-1210	M12×1.0	10	60	45.5	4.5	4	3	14
AC-1412	M14×1.5	12	88	67	9	6	4	19
AC-1416	M14×1.5	16	111	86	9	6	4	19

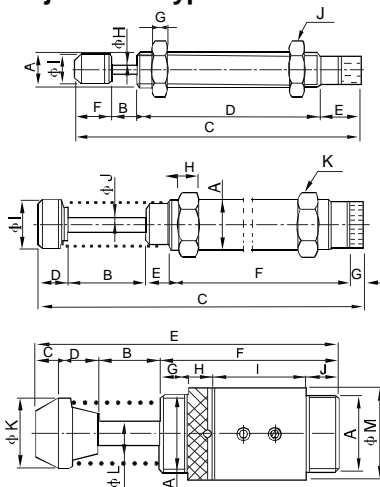
Shock Absorber Series AC, AD

ANSSION
PNEUMATIC & HYDRAULIC

With cap



Adjustment type



Model/Symbol	A	B	C	D	E	F	G	H	I	J
AC-0806	M8×1.0	6	52.4	33	5	3	2.8	6.6	8.4	11
AC-1005	M10×1.0	5	41.5	22.9	4.8	3	3	8.6	8.5	12.7
AC-1008	M10×1.0	8	59.5	38	5	3	3	8.6	8.5	12.7
AC-1210	M12×1.0	10	69.5	45.5	4.5	4	3	10.3	9.5	14
AC-1412	M14×1.5	12	102.5	67	9	6	4	12	14.5	19
AC-1416	M14×1.5	16	125.5	125.5	9	6	4	12	14.5	19
AC-2020	M20×1.5	20	146.5	146.5	9	8	9	18	16.5	26
AC-2050	M20×1.5	50	233.5	158	9	8	9	18	16.5	26
AC-2525	M25×1.5	25	154.3	101	10	10	8	22	18.3	32
AC-2540	M25×1.5	40	208.3	127	10	10	8	22	31.3	32
AC-3660	M36×1.5	60	243	134	11	15	10	35	21	46

Model/Symbol	A	B	C	D	E	F	G	H	I	J
AD-1410	M14×1.5	10	113.5	73	16	14.5	6	4	12	19
AD-2016	M20×1.5	16	149.5	101	16	16.5	8	6	18	26
AD-2525	M25×1.5	25	161.8	101	17.5	18.3	10	8	22	32
AD-2540	M25×1.5	40	215.8	127	17.5	31.3	10	8	22	32

Model/Symbol	A	B	C	D	E	F	G	H	I	J	K
AD-3650	M36×1.5	50	242	21	17	146	8	15	35	10	46
AD-4225	M42×1.5	25	186.6	34	26	104.5	5	15	44.5	12	50
AD-4250	M42×1.5	50	241	34	26	134	5	15	44.5	12	50
AD-4275	M42×1.5	75	301.5	39	26	164.5	5	15	44.5	12	50

Model/Symbol	A	B	C	D	E	F	G	H	I	J	K	L
AD-6450	2½-UNF(63.5)	50	18.8	33	247.8	146	23	20	77	26	59	20
AD-64100	2½-UNF(63.5)	100	18.8	33	347.8	196	23	20	127	26	59	20
AD-64150	2½-UNF(63.5)	150	18.8	43	467.8	256	23	20	187	26	59	20

Accessories

◆ How to Order

SC - 12

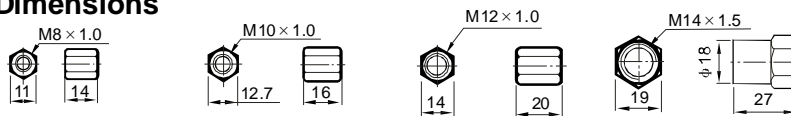
I.D. thread

Series

SC Stopper nut

* SC: M8-M36
F: M36-M42

◆ Dimensions

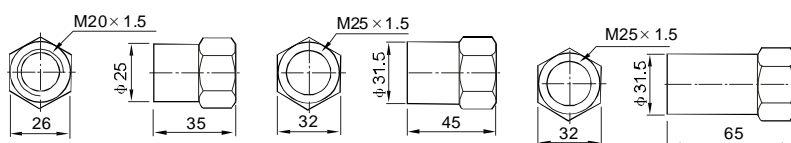


SC-08

SC-10

SC-12

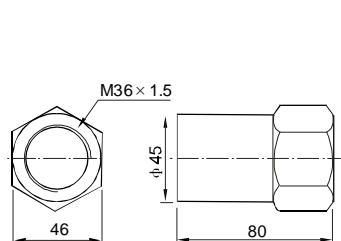
SC-14



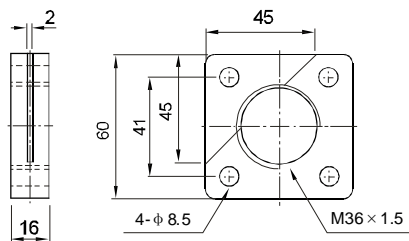
SC-20

SC-25

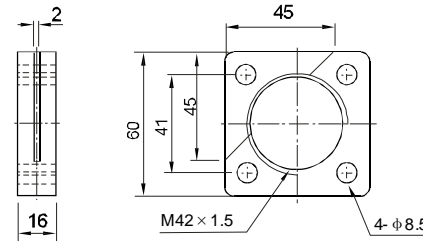
SC-40



SC-50



F36



F42

◆ Specifications

Item	SC-08	SC-10	SC-12	SC-14	SC-20	SC-25	SC-40	SC-50	F36	F42
Model	AC-0806	AC-1005 AC-1008	AC-1210	AC-1412 AC-1416 AD-1410	AC-2020 ACD-2030 AC-2050 AD-2015	AC-2525 AD-2525	AC-2540 AD-2525	AC-3660 AD-3650	AC-3660 AD-3650	AD-4225 AD-4250 AD-4275

I

CJP

CJ1

DNC

DNCB

DNG

C95

SI

CS1

MB

SU

SC

DSNU

C85

CJ2

CM2

MA

MAL

ADVU

CQ2

CQS

SDA

CU

DPZ

CXS

TN

ADVUL

CQM

MGP

MGG

CRA1

CY1B

CS
Auto switch

D
Auto switch

AC,AD

HR

RB

RBQ