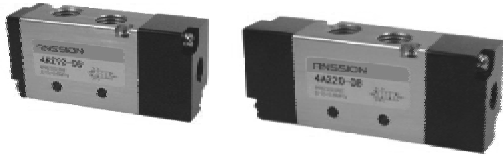




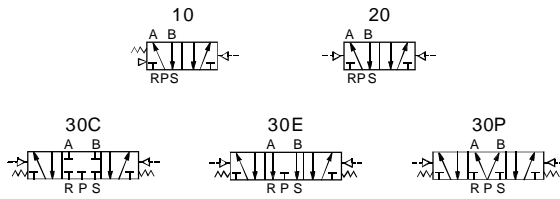
5 Port Air Operated Valve

Body Ported

Series 4A200



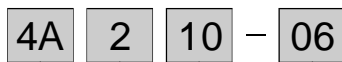
Symbol



◆ Specifications

Item/Model	4A210-06	4A220-06	4A230C-06	4A230E-06	4A230P-06	4A210-08	4A220-08	4A230C-08	4A230E-08	4A230P-08
Fluid	Air									
Action	Exterior control									
Type of actuation	5 port 2 position		5 port 3 position			5 port 2 position		5 port 3 position		
Orifice size	14mm ² (Cv=0.78)		12mm ² (Cv=0.67)			16mm ² (Cv=0.89)		12mm ² (Cv=0.67)		
Port size	In=Out=Exhaust=1/8					In=Out=1/4 Exhaust=1/8				
Lubrication	Not required									
Operating pressure range	0.15~0.8 MPa									
Proof pressure	1.2 MPa									
Ambient and fluid temperature	-5~60°C (No freezing)									
Max. operating frequency	5 Hz		3 Hz			5 Hz		3 Hz		
Weight	220g	320g	400g	400g	400g	220g	320g	400g	400g	400g

◆ How to Order



Port size

06	1/8	08	1/4
----	-----	----	-----

Type of actuation

10	Single acting	20	Double acting
30C	Closed center	30E	Exhaust center
30P	Pressure center		

Series

2	200 Series
---	------------

Model

4A	5 port 2(3) position air valve
----	--------------------------------

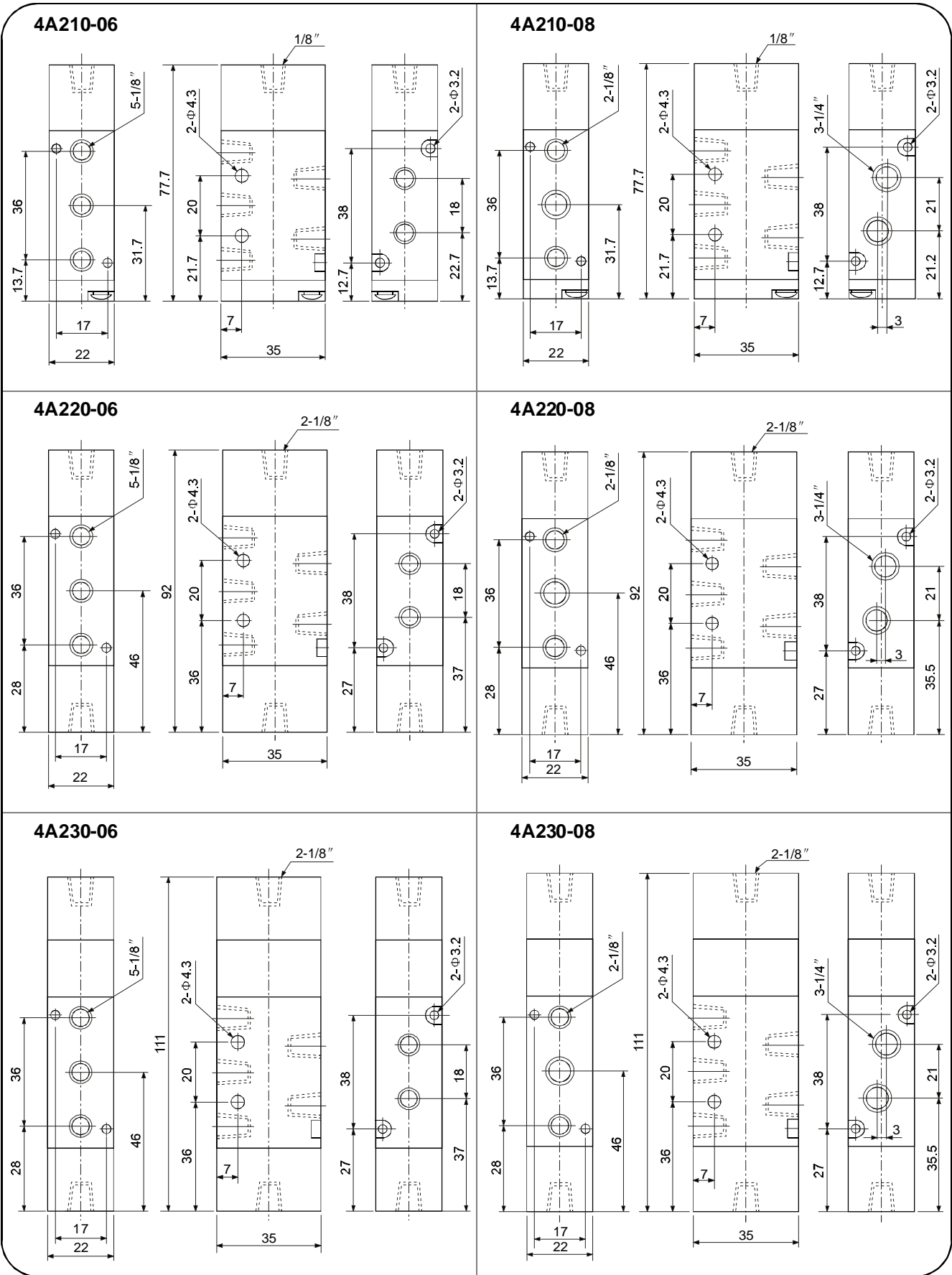
5 Port Air Operated Valve

Body Ported

Series 4A200



◆ Dimensions



II
VF
SY
SYJ
4V100
4V200
4V300
4V400
VT307
VP
3V
2W
2WH
2L
2V
2P
VFA
SYA
4A100
4A200
4A300
3A100
3A200
3A300
3L
4L
4H
SL,SH
4HV
HV,K
3FM
3F
4F
FV
MSV
MOV
JM
TAC
HSV
RE
ASC
KA
ACV
KS
QE
Manifold